

## He aha a SouthSci?

I te wā nei e whakahaeretia ana te **Participatory Science Platform** i Tāmaki ki te tonga (SouthSci), i Taranaki me Ōtākou. He kaupapa tēnei i raro i te **A Nation of Curious Minds**, he hōtaka kāwanatanga hei akiaki i ngā tāngata katoa o Aotearoa kia whai wāhi atu ki te pūtaiao me te hangarau.

E kitea nuitia ana te pūtaiao, te hangarau, te pūhanga me te pāngarau huri noa i a tātou. Ahakoa tō hiahia ki te whakautu i tētahi pātai pūtaiao nui, te whakatau rānei i tētahi take mā te hoahoa me te hangarau, ka taea pea e mātou te tautoko i tō tūhuratanga!

Mō ētahi atu mōhiohio, haere ki [www.curiousminds.nz](http://www.curiousminds.nz)

## Ko wai mātou?

Ko **Te Hononga Akoranga – COMET**, he rōpū kaitiaki ohaoha motuhake, he CCO nā Te Kaunihera o Tāmaki Makaurau hoki, e whakahau ana i te mātauranga pai ake, tōkeke ake, ngā pūkenga me te akoranga mutunga kore mā te hunga katoa o Tāmaki Makaurau. E whakarato ana mātou i te rangahau, te whanaketanga kaupapa me te hautūtanga kounga nui, whaihua hoki, mō ngā kaupapa whiti-rāngai.

E whai ana a **STEM Alliance Aotearoa** ki te whakarite i te hononga o ngā hapori me ngā pakihia pūtaiao i Aotearoa, me te hāpai hoki i ngā taiohi mahi paetata, e whai pūkenga pūtaiao ana.

E whakahaeretia ana a SouthSci e **Ying Yang**, ā, e tautokona ana e **Jonathan Longstaff**. Ka aromatawaitia ngā tono e te Rōpū Urungi o SouthSci, otirā ko ngā kaiwhaipānga paetata ōna mema.



## CURIOUS MINDS

HE HIHIRI I TE MAHARA

Participatory Science Platform  
Te rohe o Tāmaki Makaurau ki te tonga



Ki te hiahia tonu koe, haere ki tā mātou pae tukutuku mō ngā taipitopito.

*"I whakaaro mātou ko te pūtaiao he mahi pahū, he panonitanga tae, he mēhanga hoki; ināianei e whakaaro ana mātou ko tōna kaupapa kē he hanga mea, kia māmā ake, ā, ka taea hoki te kai!"*  
– Arnique rāua ko Taina,  
11 tau te pakeke

## Whakapā mai!

Waea mai ki a mātou i (09) 307 2101

Īmēra mai ki a mātou i [stem@comet.org.nz](mailto:stem@comet.org.nz)

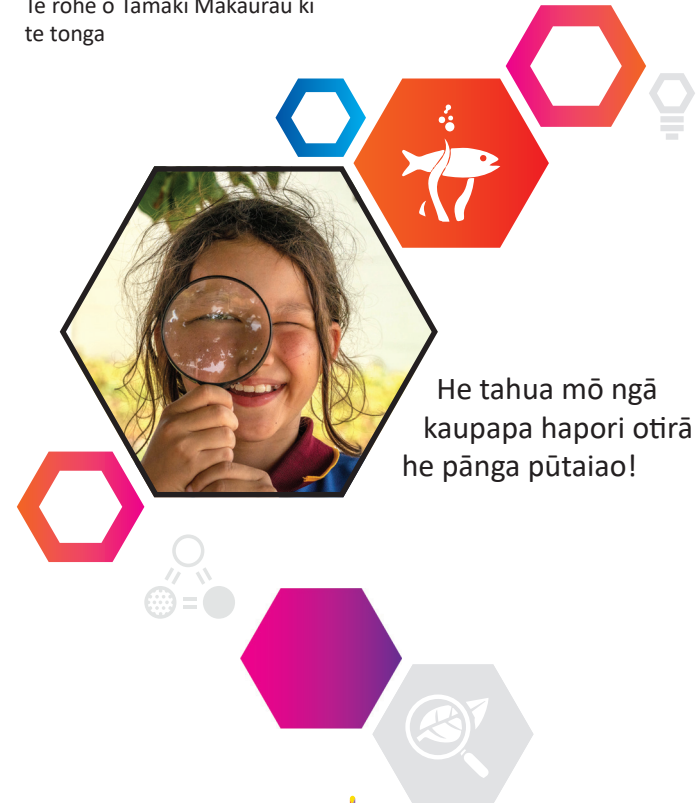
Kimihia mātou i te ipurangi i <https://comet.org.nz/our-campaigns/southsci>

Facebook mai ki a mātou @SouthSci

## CURIOUS MINDS

HE HIHIRI I TE MAHARA

Participatory Science Platform  
Te rohe o Tāmaki Makaurau ki te tonga



He tahua mō ngā kaupapa hapori otirā he pānga pūtaiao!

## SouthSci

He pātai tā te katoa: he aha tāu?

Mēnā he moni wāu (atu ki te \$20,000 mō ia kaupapa), ā, me ngā tohunga hei āwhina, ka taea e koe te whakautu i tō pātai?

# Tukuna tō pohewatanga kia rere – mēnā i a koe te moni, me te āwhina tohunga, he aha te pātai e rapa ana koe kia whakautua?

## Ko wai ka whai wāhi atu?

Ko ngā rōpū hapori, ngā kura, ngā mātanga pūtaiao rānei e mahi tahi ana me ngā tamariki, taiohi rānei. Ka uru ki ngā rōpū hapori ngā whakahaere kei te hapori, ngā rōpū kore mahi moni, ngā pakihi me ngā tōpūtanga Māori, o Te Moana-nui-a-Kiwa hoki.

Me whakahaere ngā kaupapa i roto i ngā rohe poari o Tāmaki Makaurau ki te tonga e whakaatu ana i runga i te mahere i te taha matau. Mō tētahi kaupapa kotahi, ka taea e te rōpū te tono atu ki te \$20,000 te tahaui a mātou.

Ko ia kaupapa me noho hei kaupapa mahi tahi i waenga i te hapori, me ngā tohunga Pūtaiao, Hangarau, Pūhanga me te Pāngarau (STEM), me te hunga taiohi.



## Me pēhea koe e tono ai?

Whāia ngā tāwhaingā i te hoahoa hātepe i te taha matau. Kei konei mātou ki te āwhina, i ngā wāhanga katoa o te hātepe.

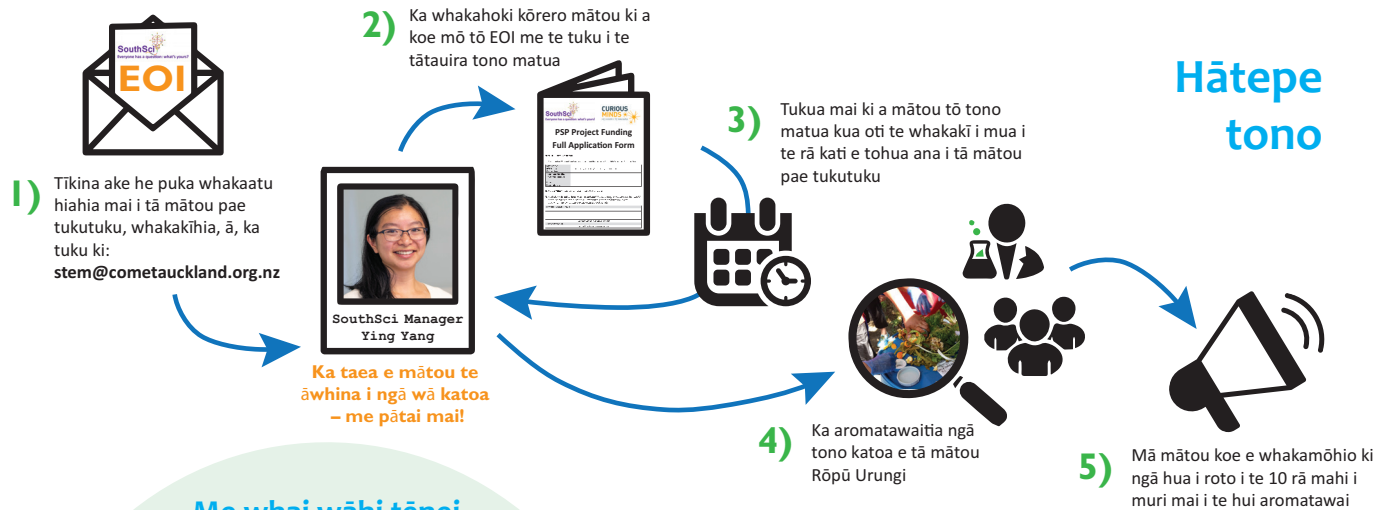
E wātea ana hoki ngā kaiārahi whakahaere kaupapa mai i ngā whakahaere STEM.

Mēnā he pātai tāu, he whakaaro rānei engari kāore he kaupūtaiao hei āwhina ake, māna rānei he kaupūtaiao koe engari kāore ō rōpū hapori hei

tūhonotanga, whakamōhio mai i a mātou, ā, mā mātou koe e āwhina ki te tūhono ake.

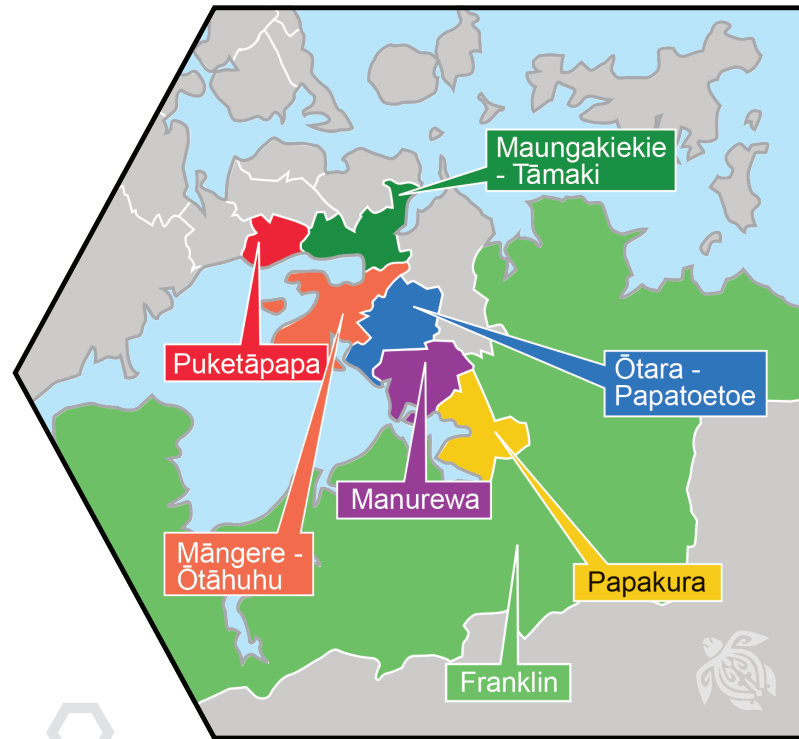
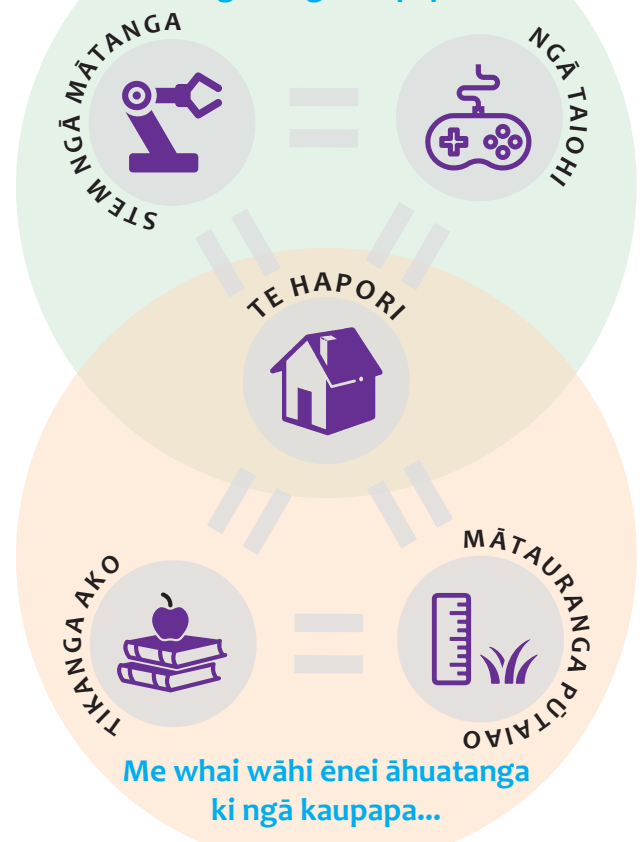
Ko te roanga noa o ngā kaupapa ko te 18 marama, iti iho rānei. Ka taea hoki e koe te whakamahi i ā mātou tahaui ki te utu i te wāhanga tuatahi o tētahi kaupapa nui ake. Ka taea e koe te tono, atu ki te \$20,000 tāra mō ia kaupapa i a mātou, engari e taea ana e koe te kīnaki ki ētahi atu pūtea mai i ētahi atu mātāpuna, i ētahi atu tahaui rānei.

Tirohia tā mātou pae tukutuku mō ngā take rangahau, te puka whakaatu hiahia, me ngā rā e kati ai te tono.



**Ka taea e mātou te āwhina i ngā wā katoa – me pātai mai!**

## Me whai wāhi tēnei hunga ki ngā kaupapa...



## Ngā poari ā-rohe māraurau o SouthSci

