

## What is SouthSci?

The **Participatory Science Platform** is currently run in south Auckland (SouthSci), Taranaki and Otago. It is an initiative under **A Nation of Curious Minds**, a government programme to encourage all New Zealanders to get involved with science and technology.

A Nation of Curious Minds is coordinated by the Ministry of Business, Innovation and Employment and the Ministry of Education, together with the Office of the Prime Minister's Chief Science Advisor.

For more information, visit [www.curiousminds.nz](http://www.curiousminds.nz)

## Who are we?

**COMET Auckland – Te Hononga Akoranga** is an independent charitable trust and an Auckland Council CCO championing better and fairer education, skills and lifelong learning for all Aucklanders. We provide high quality and effective research, project development and leadership for cross-sector initiatives.

The **STEM Alliance Aotearoa** aims to facilitate the connection of communities and science businesses in Aotearoa New Zealand and advocate for locally-employed, science-skilled youth.

SouthSci is run by **Dr Sarah Morgan**, STEM Manager at COMET, and **Jonathan Longstaff**, Project Support. Applications are assessed by the SouthSci Steering Group and the Science Advisory Panel, which are made up of local stakeholders.



## CURIOUS MINDS

HE HIHIRI | TE MAHARA

Participatory Science Platform  
South Auckland Region



To apply, visit our  
website for details!

*"We thought science was explosions and colour changing and potions; now we think it's more about making things and making [them] easier to do and edible!"*  
– Arnique and Taina, both 11

## Contact us!

Call us on (09) 307 2101

Email us at [stem@cometauckland.org.nz](mailto:stem@cometauckland.org.nz)

Find us online at [www.cometauckland.org.nz/southsci](http://www.cometauckland.org.nz/southsci)

Facebook us @SouthSci

Tweet us @SouthSci

Instagram us @SouthSci

## CURIOUS MINDS

HE HIHIRI | TE MAHARA

Participatory Science Platform  
South Auckland Region



A fund for  
community projects  
with a science twist!



Everyone has a question: what's yours?

If you had the **MONEY** (up to \$20,000 per project) and the **EXPERTS** to help, could you answer your question?

Let your imagination run wild — if you had the money and expert help, what question would you seek to answer?

Who can get involved?

Community groups, schools, or science professionals who work with children or young people. Community groups include community-based organisations, not-for-profits, businesses and Māori or Pasifika collectives.

Projects must be based within the south Auckland local boards shown on the map at right. For any single project, a group may apply for up to \$20,000 in funding from us.

Every project must be a collaboration between the community, science / Science, Technology, Engineering and Mathematics (STEM) professionals and young people.

How can you apply?

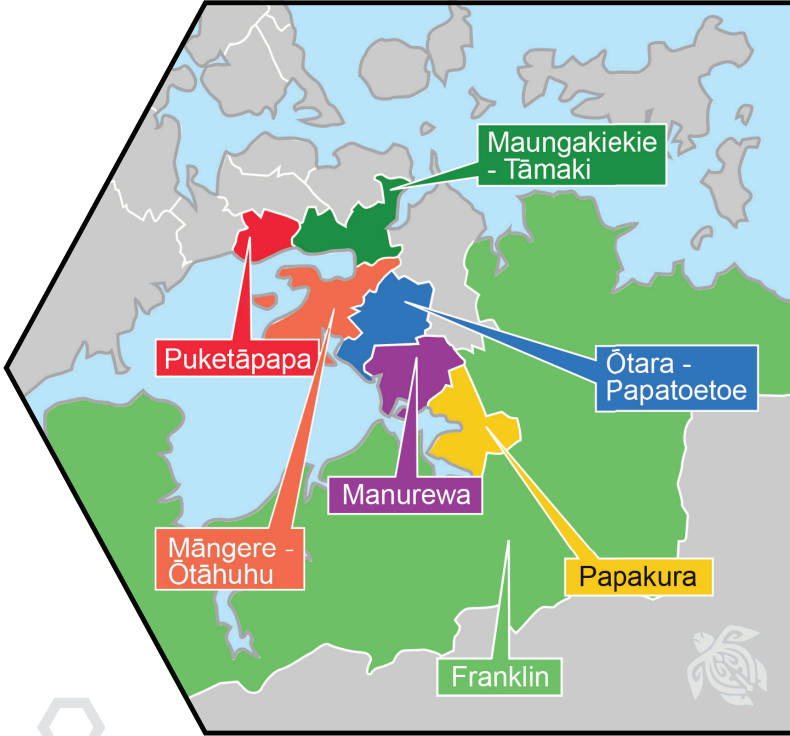
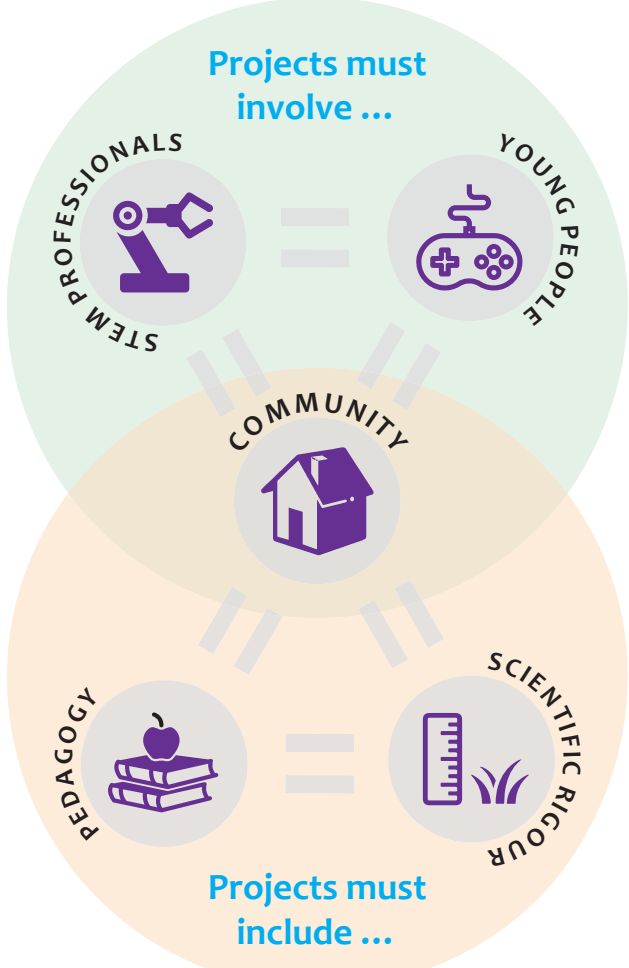
Follow the steps in the process diagram at right. We're here to help at any stage of the process.

We also have project management mentors available from local STEM organisations.

If you have a question or idea but no scientists to help, or are a scientist with no community group to connect with, let us know and we can help you get connected.

Projects normally run for 18 months or fewer. You can also use our funding to cover the first phase of a larger project. You can apply for a maximum of \$20,000 per project from us, although you are welcome to supplement it with funds from other sources or with co-funding.

Check our website for case studies, the expression of interest form and application due dates.



SouthSci eligible local boards

