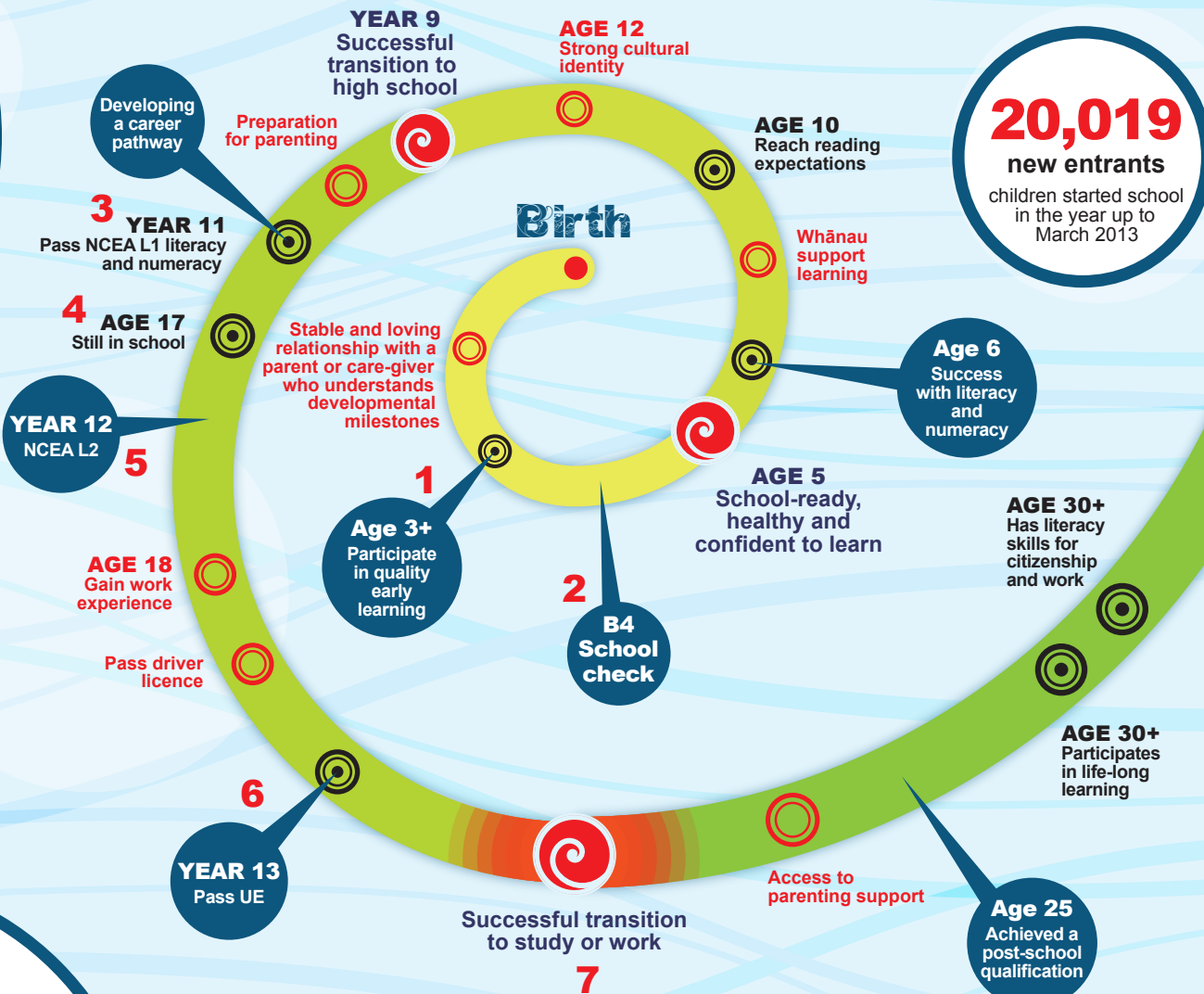


Learning Auckland: How are we doing?

Progress towards Learning Auckland targets 2013

Pathway to success for Aucklanders



20,019
new entrants
children started school
in the year up to
March 2013

Household Labour Force Survey, Auckland Region (March 2013)

7 Transition to work

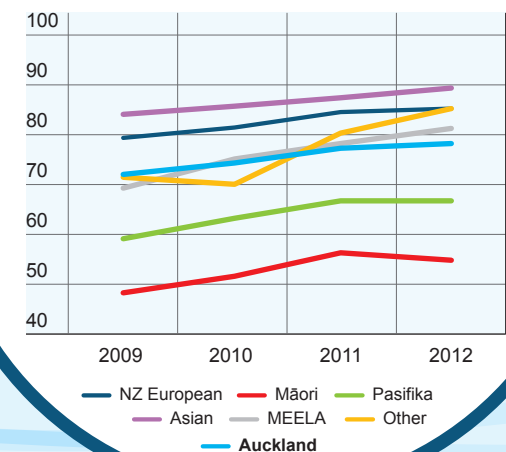
Failure to launch into study or work from school can have long term negative impacts. 15-19 and 20-24 year olds have disproportionately borne the brunt of the economic downturn, facing high unemployment. Unemployment rates particularly high for 15-19 year olds (26% for young men, 32% for young women). Approximately 27,000 young people (12%) are Not in Education, Employment or Training.

6 University-ready school leavers

55% (11,079) achieved University Entrance in 2011, up from **48%** in 2009.

Education Counts (2013): UE

Auckland school-leavers with NCEA Level 2 or above, by ethnicity, 2009-2011 (%)



5 School leavers with NCEA Level 2 or above

An increasing number of school leavers achieve NCEA L2 and the gap for Māori and Pasifika achievement compared to Auckland students as a whole has closed somewhat. But progress is not accelerating.

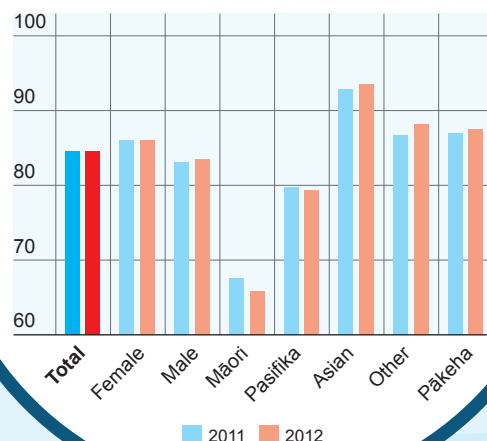
Education Counts (2013): NCEA attainment

4 Retention

Students who leave school early and without qualifications are at greater risk of poor life and work outcomes. Boys and Māori students are more likely to leave school early.

Education Counts (2013): Retention

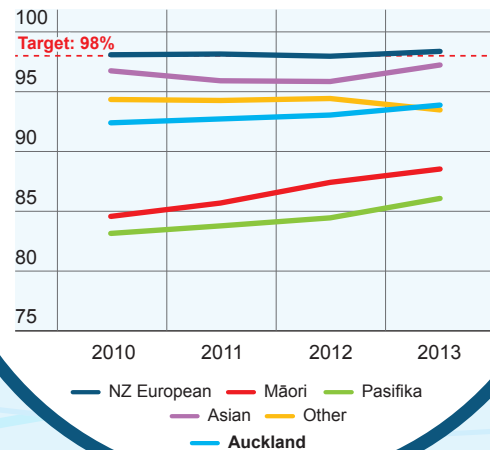
Retention till age 17 at Auckland schools, 2011 (%)



2 The B4 School Check is a free health and development check for four year olds, identifying and addressing concerns that could affect a child's ability to get the most benefit from school (such as a hearing problem or communication difficulty). District Health Boards agree a target number of checks annually

RIMU (2013) Auckland Plan Targets, a baseline report (draft). Auckland Council.

Auckland children starting school who attended ECE, 2010-2013 (%)

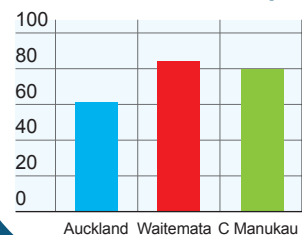


1 ECE participation

Quality early childhood education (ECE) has long-term positive benefits for vulnerable children. Participation from age 3 is the focus. Participation is tracking up and accelerating for Māori and Pasifika over the last two years.

Education Counts (2013): Prior participation

High-need children who had B4 school check (%)



3 Literacy and numeracy are the building blocks for success

82% of girls and **70%** of boys passed NCEA L1 literacy after Year 11 in 2011. Regardless of ethnicity, boys did not do as well as girls. Without NCEA Level 1 literacy, students cannot progress.

LEARNING AUCKLAND

Ako Tāmaki Makaurau

www.learningauckland.org.nz