

TĀMAKI MAKĀURAU

EDUCATION, LEARNING AND SKILLS

A SNAPSHOT OF TEN YEARS' PROGRESS

MĀORI EDITION

OUR PEOPLE¹

227,898

Tāmaki Makaurau residents of Māori descent in 2023 (**14%** of the city's total residents)

978,246

Aotearoa residents of Māori descent in 2023 (**20%** of the country's total residents)

163,920

Tāmaki Makaurau residents of Māori descent in 2013 (**13%** of the city's total residents)

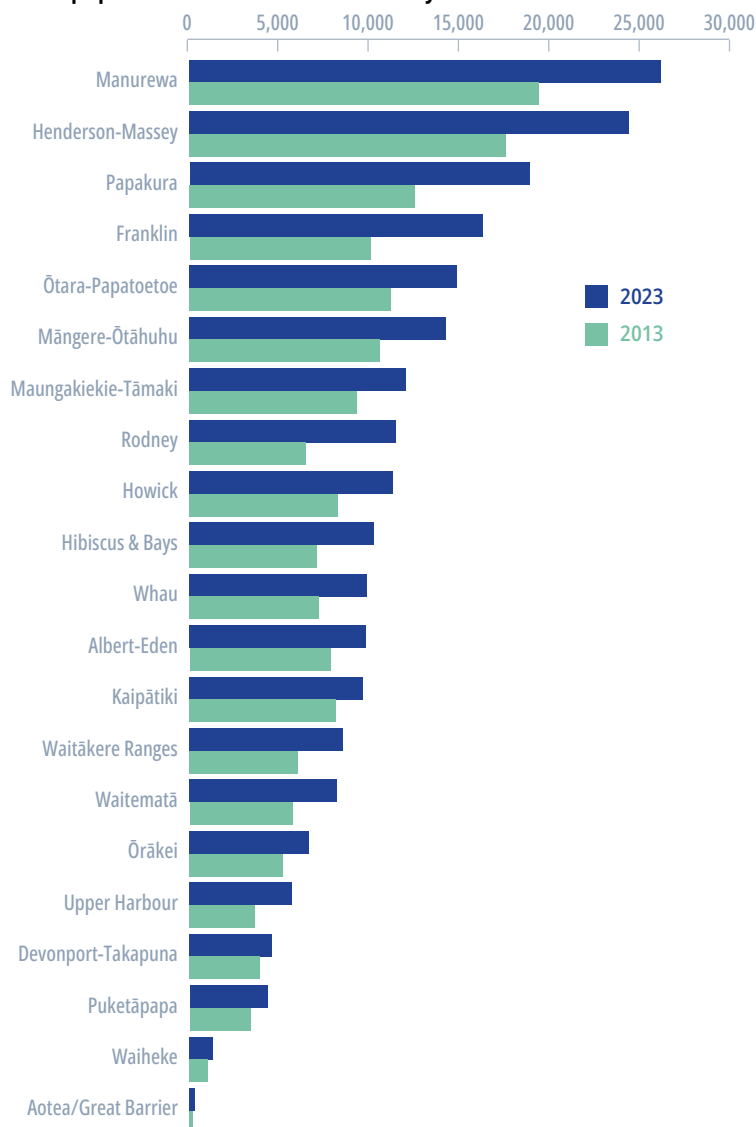
668,721

Aotearoa residents of Māori descent in 2013 (**18%** of the country's total residents)

TĀMAKI MAKĀURAU HAS THE LARGEST MĀORI POPULATION IN AOTEAROA.

(**23%** of the total Māori population in 2023; **25%** in 2013).

Māori population in Tāmaki Makaurau by local board



Population age

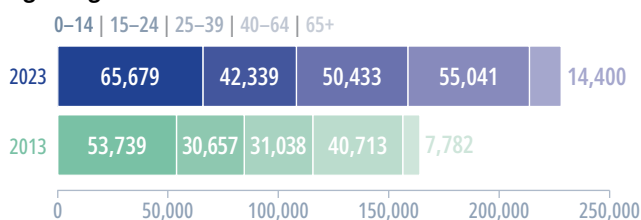
27

the median age for Tāmaki Makaurau's residents of Māori descent in 2023 (**24** in 2013)

47%

of Tāmaki Makaurau's residents of Māori descent were under 25 in 2023 (**51%** in 2013)

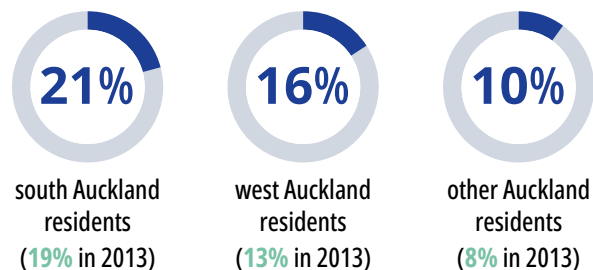
Age range of Tāmaki Makaurau residents of Māori descent



Expected growth of the under-25 Māori population in Tāmaki Makaurau

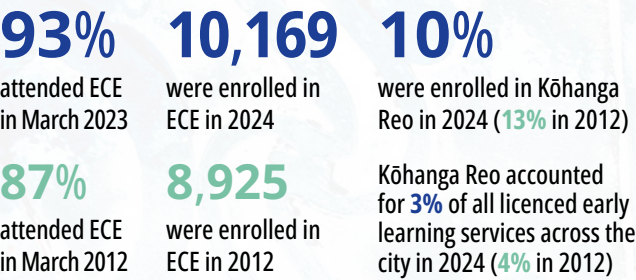


Proportion of residents of Māori descent by area in 2023

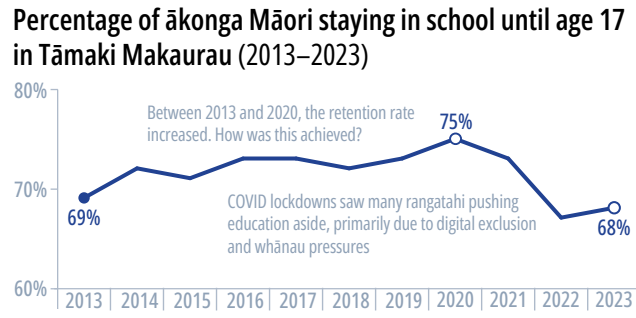


EARLY YEARS²

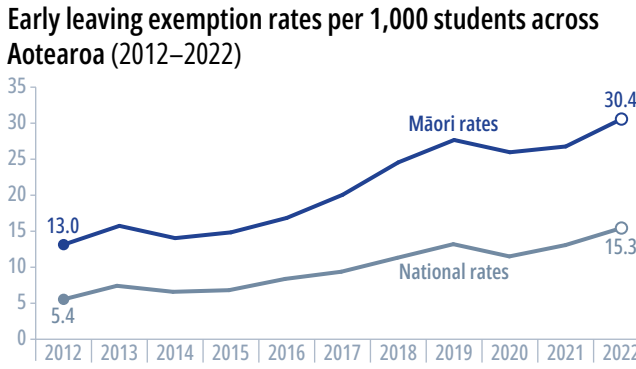
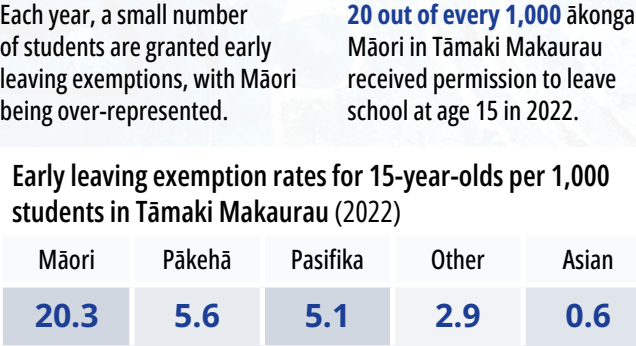
Tamariki Māori in Tāmaki Makaurau ...



STAYING AT SCHOOL²



EARLY EXEMPTIONS²



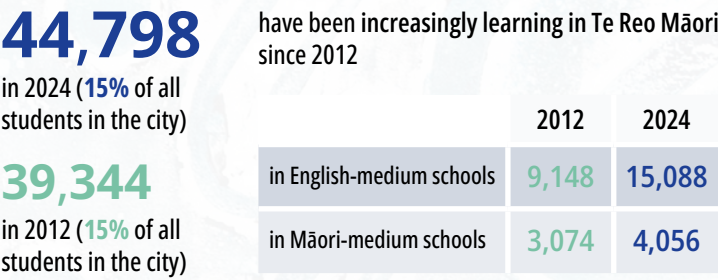
Most students (85% in 2020) re-enrol in alternative education options.³

ARE ĀKONGA MĀORI AND THEIR WHĀNAU MORE LIKELY TO SEEK ALTERNATIVE EDUCATION OPTIONS IF TRADITIONAL PATHS AREN'T WORKING FOR THEM?

In 2020, the proportion of rangatahi Māori leaving school to pursue a career full-time was the highest it has been since 2012 — an increase from 5% to 11% of those granted early exemptions from school.³

IN SCHOOL²

Ākonga Māori in Tāmaki Makaurau ...



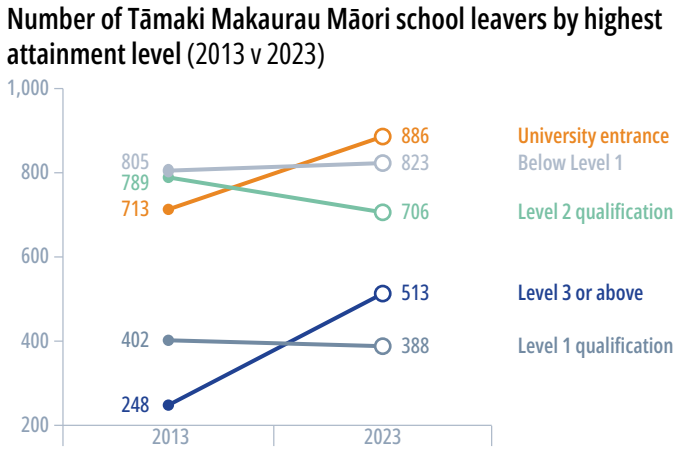
1 in 4

students in Tāmaki Makaurau schools with high socio-economic barriers identified as Māori in 2024 (49% of students in decile 1–3 schools identified as Māori in 2012)

HAS THE SOCIO-ECONOMIC STATUS OF TĀMAKI MAKĀURAU'S ĀKONGA MĀORI IMPROVED, OR HAS A CHANGE IN THE RATING SYSTEM MERELY ALTERED FUNDING ELIGIBILITY?
AN EQUITABLE SYSTEM IS ESSENTIAL TO ENSURE FAIR ACCESS TO RESOURCES.

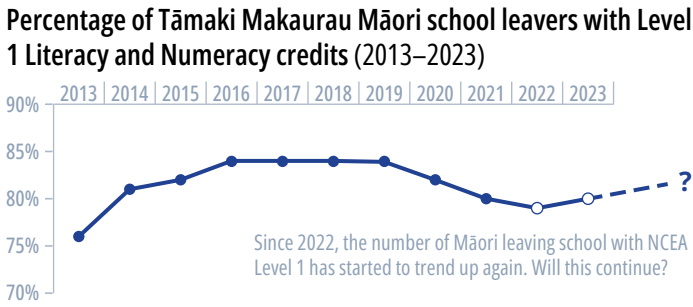
NCEA ATTAINMENT²

THE 10-YEAR TREND SHOWS POSITIVE PROGRESS FOR MĀORI, ESPECIALLY IN ATTAINMENT OF HIGHER-LEVEL QUALIFICATIONS.



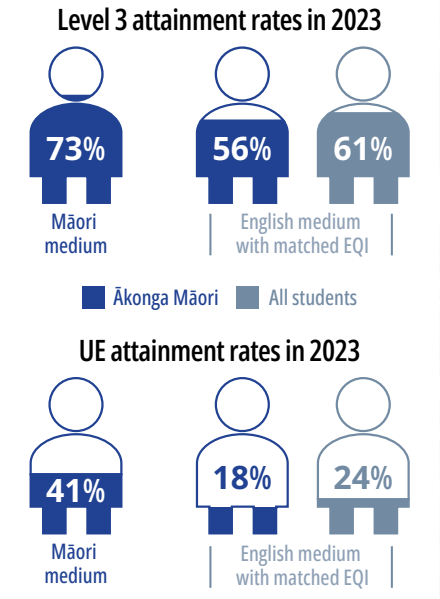
Since 2013, the number of ākonga Māori attaining qualifications at Level 3 or above and/or achieving University Entrance (UE) has increased, while those attaining Level 1 or below has remained relatively stable or has decreased.

Students must now achieve a corequisite in Te Reo Matatini me te Pāngarau | Literacy and Numeracy to be awarded an NCEA qualification at any level.



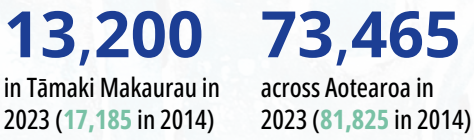
KURA KAUPAPA MĀORI⁴

NCEA and UE attainment rates for ākonga Māori learning in Te Reo Māori in Māori medium schools are higher than the attainment rates for all students in English-medium schools with matched socio-economic barriers to attainment as measured by the Equity Index (EQI).



MĀORI TERTIARY ENROLMENTS²

Ākonga Māori enrolled at tertiary institutions ...



Māori tertiary enrolments across Aotearoa (2014–2023)

Provider	Percent change
Universities	▲ 8%
Public providers	▼ 7%
Wānanga	▼ 15%
Polytechnics	▼ 16%
Private training establishments	▼ 25%

DID THE POLYTECH UPHEAVAL DISRUPT STUDENTS' STUDY PLANS?

Across Aotearoa ...

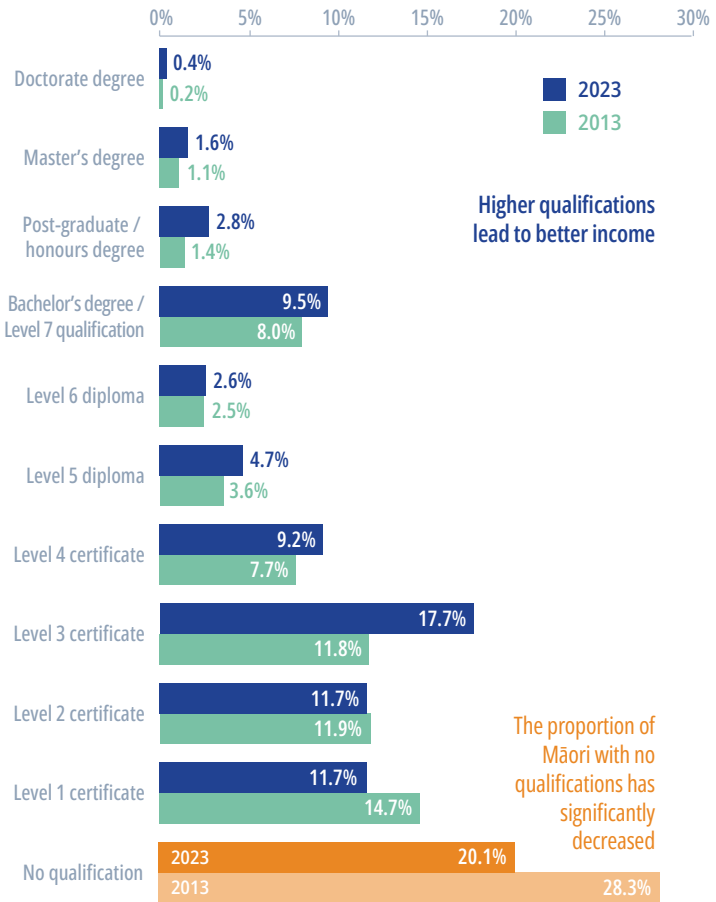
- More ākonga Māori are studying part-time
- Fewer tāne Māori are enrolling at tertiary institutions
- Enrolments in Architecture and Society & Culture remain stable or are growing
- Enrolments in Business, Creative Arts, Engineering and IT have all decreased

Māori university enrolments across Aotearoa have increased

2013	Degree programmes	2023
55	Doctorates	85
360	Master's degrees	635
4,270	Bachelor's degrees	4,560

SKILLS & QUALIFICATIONS¹

Percentage of qualifications for Māori aged 15+ in Tāmaki Makaurau



Income growth for Māori by qualification

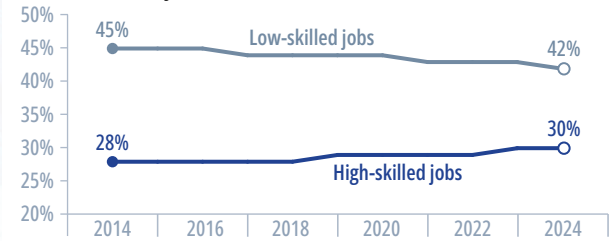
Qualification type	2013	Percent increase	2023
No qualification	\$533	44%	\$767
School qualification	\$644	73%	\$1,146
Tertiary certificate (Levels 1–3)	\$550	75%	\$960
Tertiary certificate / diploma (Levels 4–6)	\$767	43%	\$1,097
Bachelor's degree or higher	\$986	56%	\$1,534

The median weekly income for Māori has increased by 62% over the last 10 years (2013–2023)



MĀORI JOBS & INDUSTRY

More Māori are employed in high-skilled jobs and fewer in low-skilled jobs in Tāmaki Makaurau since 2014⁵



\$6 billion

estimated contribution of Tāmaki Makaurau's Māori businesses to Aotearoa's profits and wages GDP in 2020 (26% of total GDP)⁶

TĀMAKI MAKĀURAU'S
MĀORI BUSINESSES
PUNCH ABOVE
THEIR WEIGHT.

The Māori economic contribution to Aotearoa's production GDP⁷

\$32 billion

(9.8% in 2023)



\$17 billion

(6.3% in 2018)

Since 2018, the Māori economy has shifted dramatically, moving away from its traditional reliance on primary industries.⁷

Three largest sectors in the Māori economy (2023)⁷

Sector	Value
Professional, Scientific and Technical Services	\$5.1 billion
Administrative, Support and Other Services	\$4.2 billion
Real Estate and Property Services	\$4.1 billion

IS TEACHING NO LONGER A VIABLE CAREER OPTION?²

Kaiako Māori in Tāmaki Makaurau ...

591

in ECEs in 2023
(64% qualified)

1,678

in schools in 2023
(77% female)

4%

of the total teacher workforce
in 2023 (7% in 2012)

463

in ECEs 2012
(57% qualified)

1,130

in schools in 2012
(75% female)

Change in the number of students completing teacher education across Aotearoa (2013–2023)

Ethnicity	2013	Percent change	2023
Asian	435	▲ 5%	455
Other	170	▼ 26%	125
Māori	865	▼ 29%	615
Pākehā	3,795	▼ 36%	2,410
Pasifika	420	▼ 36%	270
Total	5,130	▼ 34%	3,385



SHOULD WE BE CONCERNED THAT FEWER MĀORI ARE CHOOSING EDUCATION AS A CAREER?

REFERENCES

- Statistics New Zealand (2025). *Statistics New Zealand website*. Retrieved 31 March 2025 from <https://www.stats.govt.nz>
- Ministry of Education (2025). *Education Counts website*. Retrieved 31 March 2025 from <https://www.educationcounts.govt.nz/home>
- Ministry of Education (2022). *Ngā Haeata o Aotearoa 2020*. Retrieved from <https://www.educationcounts.govt.nz/publications/schooling/5851/nga-haeata-o-aotearoa-2020>
- New Zealand Qualifications Authority. (2024, May 27). *Aide-Memoire: NCEA in Kaupapa Māori senior secondary settings (OC00816)*. Retrieved from <https://www2.nzqa.govt.nz/assets/About-us/Official-releases/2024-2025/NCEA-in-Kaupapa-Maori-Senior-Secondary-settings-OC00816.pdf>
- Infometrics (2025). *Regional economic profile 2024*. Retrieved from <https://rep.infometrics.co.nz/auckland/ethnicity/skills/level?ethnicity=maori>

6. Mok, T. M., & Malcom, K. (2022, May). *He karapa raraunga: Ōhanga Māori i Tāmaki Makaurau | Data snapshot: Tāmaki Makaurau Māori economy*. The Southern Initiative, Auckland Council. Retrieved from <https://www.tsi.nz>

7. Business and Economic Research Limited (BERL). (2024, December 12). *Snapshot: Te Ōhanga Māori 2023*. Ministry of Business, Innovation and Employment. Retrieved from <https://www.mbie.govt.nz>

TE HONONGA
AKORANGA
COMET



© 2024 Te Hononga Akoranga COMET
PO Box 3430, Shortland St, Auckland 1010



cometauckland.org.nz



[/cometaki](https://cometaki)



[/company/comet-auckland](https://company/comet-auckland)